

Optimal Control of Connected and Automated Vehicles at Roundabouts: An Investigation in a Mixed-Traffic Environment^{*}

Liuhui Zhao^{*} Andreas Malikopoulos^{*} Jackeline Rios-Torres^{**}

^{*} *University of Delaware, Newark, DE 19716 USA (e-mails: lzhao@udel.edu; andreas@udel.edu).*

^{**} *Oak Ridge National Laboratory, Oak Ridge, TN 37830 USA (e-mail: riosrtorresj@ornl.gov)*

Abstract: Connectivity and automation in vehicles provide the most intriguing opportunity for enabling users to better monitor transportation network conditions and make better operating decisions to improve safety and reduce pollution, energy consumption, and travel delays. This paper investigates the implications of optimally coordinating vehicles that are wirelessly connected to each other in roundabouts to achieve a smooth traffic flow. We apply an optimization framework and an analytical solution that allows optimal coordination of vehicles for merging in such traffic scenario. The effectiveness of the proposed approach is validated through simulation and it is shown that fully coordinated vehicles reduce total travel time by 51% and fuel consumption by 35%. Furthermore, we study the influence of vehicle coordination in a mixed-traffic environment and compare the network performance under different market penetration rates of connected and automated vehicles (CAVs). For this particular study with near-capacity demand, high penetration of CAVs is necessary to ensure an efficient and effective control, due to extremely unstable traffic.

Keywords: Connected and automated vehicles, vehicle coordination, cooperative merging control, roundabouts.

1. INTRODUCTION

We are currently witnessing an increasing integration of energy and transportation, which, coupled with human interactions, is giving rise to a new level of complexity in the next generation transportation systems; see Malikopoulos (2015). The common thread that characterizes energy efficient mobility systems is their interconnectivity which enables the exchange of massive amounts of data; this, in turn, provides the opportunity for a novel computational framework to process such information and deliver real-time control actions that optimize energy consumption and associated benefits. As we move to increasingly complex transportation systems new control approaches are needed to optimize the impact on system behavior of the interplay between vehicles at different traffic scenarios; see Malikopoulos (2017).

Intersections, roundabouts, merging roadways, speed reduction zones are the primary sources of bottlenecks that contribute to traffic congestion created by the drivers' responses; see Rios-Torres and Malikopoulos (2017b); Malikopoulos and Aguilar (2013). In 2015, congestion caused people in urban areas in US to spend 6.9 billion hours more on the road and to purchase an extra 3.1 billion gallons of fuel, resulting in a total cost estimated at \$160 billion; see Schrank et al. (2015).

Roundabouts generally provide better operational and safety characteristics over other typical intersections; see Flannery and Datta (1997); Flannery et al. (1998); Al-Madani (2003); Sisiopiku and Oh (2001). However, the increase of traffic may become a concern for roundabouts due to their geometry and priority system - even with moderate demands, some roundabouts can still reach capacity; see Hummer et al. (2014); Yang et al. (2004). Moreover, traffic from minor-road approaches may experience significant delay if the circulating flow is heavy. Previous research has focused mainly on enhancing roundabout mobility and safety with improved metering, or traffic signal controls, e.g., Hummer et al. (2014); Yang et al. (2004); Martin-Gasulla et al. (2016); Xu et al. (2016). These efforts investigate the potential of metering signals in improving roundabout operations during rush hours. Hummer et al. (2014) tested a metering approach for a single-lane and a two-lane roundabout models with different levels of

^{*} This manuscript has been co-authored by UT-Battelle, LLC, under contract DE-AC05-00OR22725 with the US Department of Energy (DOE). The US government retains and the publisher, by accepting the article for publication, acknowledges that the US government retains a nonexclusive, paid-up, irrevocable, worldwide license to publish or reproduce the published form of this manuscript, or allow others to do so, for US government purposes. DOE will provide public access to these results of federally sponsored research in accordance with the DOE Public Access Plan (<http://energy.gov/downloads/doe-public-access-plan>).

approaching traffic demand. Martin-Gasulla et al. (2016) studied the benefits of metering signals for roundabouts with unbalanced flow patterns. Yang et al. (2004) proposed a traffic-signal control algorithm to eliminate the conflict points and weaving sections for multi-lane roundabouts by introducing a second stop line for left-turn traffic. Xu et al. (2016) suggested a multi-level control system that combines metering signalization with full actuated control to serve different time periods throughout the day.

Connected and automated vehicles (CAVs) provide the most intriguing and promising opportunity for enabling users to better monitor transportation network conditions and make better operating decisions to reduce energy consumption, greenhouse gas emissions, travel delays and improve safety. Given the recent technological developments, several research efforts have considered approaches to achieve safe and efficient coordination of merging maneuvers with the intention to avoid severe stop-and-go driving. One of the very early efforts in this direction was proposed in 1969 by Athans (1969). Assuming a given merging sequence, Athans formulated the merging problem as a linear optimal regulator, proposed by Levine and Athans (1966), to control a single string of vehicles, with the aim of minimizing the speed errors that will affect the desired headway between each consecutive pair of vehicles. Later, Schmidt and Posch (1983) proposed a two-layer control scheme based on heuristic rules that were derived from observations of the non-linear system dynamics behavior. Similar to the approach proposed by Athans (1969), Awal et al. (2013) developed an algorithm that starts by computing the optimal merging sequence to achieve reduced merging times for a group of vehicles that are closer to the merging point.

Several research efforts have been reported in the literature proposing different approaches on coordinating CAVs at different transportation segments, e.g., intersections, roundabouts, merging roadways, speed reduction zones, with the intention to improve traffic flow. Kachroo and Li (1997) proposed a longitudinal and lateral controller to guide the vehicle until the merging maneuver is completed. Other efforts have focused on developing a hybrid control aimed at keeping a safe headway between the vehicles in the merging process, see Kachroo and Li (1997); Antoniotti et al. (1997); or developing three levels of assistance for the merging process to select a safe space for the vehicle to merge; see Ran et al. (1999). Other authors have explored virtual vehicle platooning for autonomous merging control, e.g., Lu et al. (2000); Dresner and Stone (2004), where a controller identifies and interchanges appropriate information between the vehicles involved in the merging maneuver while each vehicle assumes its own control actions to satisfy the assigned time and reference speed.

There has been a significant amount of work on vehicle coordination at urban intersections. Dresner and Stone (2004) proposed the use of the reservation scheme to control a single intersection of two roads with vehicles traveling with similar speed on a single direction on each road, i.e., no turns are allowed. In their approach, each vehicle is treated as a driver agent who requests the reservation of the space-time cells to cross the intersection at a particular time interval defined from the estimated arrival time to the intersection. Once the reservation system receives the

request, it accepts if there is no conflict with the already accepted reservations; otherwise, the request is to be rejected. In case of rejection, the driver agent is required to decelerate and send a new reservation request. Since then, numerous approaches have been reported in the literature, e.g., de La Fortelle (2010); Dresner and Stone (2008); Huang et al. (2012), to achieve safe and efficient control of traffic through intersections. Other research efforts have focused on coordinating vehicles at intersections to improve travel time, e.g., Zohdy et al. (2012); Yan et al. (2009).

In this paper, we address the problem of optimally coordinating a number of CAVs entering a roundabout, so as to improve traffic flow. The objective of this paper is to investigate the implications on fuel consumption and travel time at different market penetration levels.

The contributions of this paper are the 1) problem formulation of controlling CAVs before they enter a roundabout, 2) implementation of an analytical solution that yields the optimal acceleration/deceleration for each vehicle, and 3) investigation of the impact of the optimal solution through simulation under different traffic conditions.

2. PROBLEM FORMULATION

We consider a single-lane roundabout (Fig. 1) where traffic from two different freeways enters the roundabout with a higher speed than the imposed roundabout speed limit. Before the entry of the roundabout, there is a *control zone* and a coordinator that can communicate with the vehicles traveling inside the control zone. Note that the coordinator is not involved in any decision on the vehicle. The region at the roundabout where a potential lateral collision of the vehicles can occur is called *merging zone*. The arc length of the merging zone is S , and the length of the control zone is L . The arc length from the exit of the control zone to the entry of the merging zone is L_r . Note that L could be in the order of hundreds of m depending on the coordinator's communication range capability.

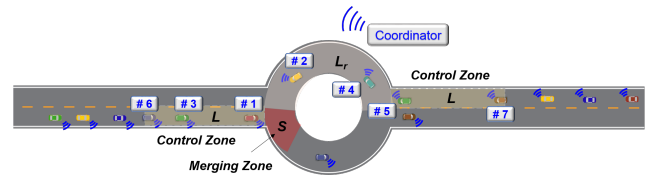


Fig. 1. A roundabout with a traffic flow of CAVs.

We consider a number of CAVs $N(t) \in \mathbb{N}$, where $t \in \mathbb{R}^+$ is the time, entering the control zone. Let $\mathcal{N}(t) = 1, \dots, N(t)$ be a first-in-first-out (FIFO) queue in the control zone. The dynamics of each vehicle $i, i \in \mathcal{N}(t)$, are represented with a state equation

$$\dot{x}(t) = f(t, x_i, u_i), \quad x_i(t_i^0) = x_i^0, \quad (1)$$

where $x_i(t), u_i(t)$ are the state of the vehicle and control input, t_i^0 is the time that vehicle i enters the control zone, and x_i^0 is the value of the initial state. For simplicity, we model each vehicle as a double integrator, i.e., $\dot{p}_i = v_i(t)$ and $\dot{v}_i = u_i(t)$, where $p_i(t) \in \mathcal{P}_i, v_i(t) \in \mathcal{V}_i$, and $u_i(t) \in \mathcal{U}_i$ denote the position, speed, and acceleration/deceleration (control input) of each vehicle i . Let $x_i(t) = [p_i(t) \ v_i(t)]^T$

denotes the state of each vehicle i , with initial value $x_i^0(t) = [0 \ v_i^0(t)]^T$, taking values in the state space $\mathcal{X}_i = \mathcal{P}_i \times \mathcal{V}_i$. The sets \mathcal{P}_i , \mathcal{V}_i , and \mathcal{U}_i , $i \in \mathcal{N}(t)$, are complete and totally bounded subsets of \mathbb{R} . The state space \mathcal{X}_i for each vehicle i is closed with respect to the induced topology on $\mathcal{P}_i \times \mathcal{V}_i$ and thus, it is compact.

To ensure that the control input and vehicle speed are within a give admissible range, the following constraints are imposed.

$$\begin{aligned} u_{min} \leq u_i(t) \leq u_{max}, \text{ and} \\ 0 \leq v_{min} \leq v_i(t) \leq v_{max}, \forall t \in [t_i^0, t_i^z] \end{aligned} \quad (2)$$

where u_{min}, u_{max} are the minimum deceleration and maximum acceleration respectively, and v_{min}, v_{max} are the minimum and maximum speed limits respectively. t_i^0 is the time that vehicle i enters the control zone, t_i^z is the time that vehicle i exits the control zone.

To ensure the absence of rear-end collision of two consecutive vehicles traveling on the same lane, the position of the preceding vehicle should be greater than, or equal to the position of the following vehicle plus a predefined safe distance $\delta_i(t)$, where $\delta_i(t)$ is proportional to the speed of vehicle i , $v_i(t)$. Thus, we impose the rear-end safety constraint

$$s_i(t) = p_k(t) - p_i(t) \geq \delta_i(t), \forall t \in [t_i^0, t_i^f] \quad (3)$$

where vehicle k is immediately ahead of i on the same road, and t_i^f is the time that vehicle i exits the merging zone. In the aforementioned modeling framework, we assume that each vehicle cruises inside the roundabout at the imposed speed limit, i.e., $v_i(t) = v_r, \forall t \in [t_i^z, t_i^f]$.

We consider the problem of minimizing the control input (acceleration/deceleration) for each vehicle i from the time t_i^0 that the vehicle enters the control zone until the time t_i^z that it exits the control zone under the hard safety constraint to avoid rear-end collision. Thus, we formulate the following optimization problem for each vehicle in the queue $\mathcal{N}(t)$

$$\min_{u_i} \frac{1}{2} \int_{t_i^0}^{t_i^z} u_i^2(t) dt \quad (4)$$

Subject to : (1), (2) $\forall i \in \mathcal{N}(t)$.

The analytical solution of (4) without considering state and control constraints was presented in Rios-Torres et al. (2015), Rios-Torres and Malikopoulos (2017a), and Ntousakis et al. (2016) for coordinating online CAVs at highway on-ramps and in Zhang et al. (2016) at two adjacent intersections. The solution of the constrained problem at a single intersection was presented in Malikopoulos et al. (2018). To implement the analytical solution of (4), each vehicle i needs to compute the time t_i^z at which it will be exiting the control zone. Thus, we introduce the notion of the coordinator to handle the information between the vehicles as follows. When a vehicle reaches the control zone at some instant t , the coordinator assigns a unique identity, which is an integer i representing the order of the vehicle in the FIFO queue inside the control zone. Once vehicle i enters the control zone, it shares its time t_i^z that it will be exiting the control zone. Then the vehicle $i + 1$ in the queue computes the time t_{i+1}^z that it will exit the control zone with respect to t_i^z . Thus, the time t_i^m that each vehicle

will be entering the merging zone can be computed directly from t_i^z .

In the situation that westbound traffic will enter the roundabout and form a circulating flow with which eastbound vehicles interact in the merging zone, we define that each vehicle $i \in \mathcal{N}(t)$ belongs to either of two different subsets: 1) $\mathcal{L}(t)$ contains all vehicles traveling westbound, and 2) $\mathcal{C}(t)$ contains all vehicles traveling eastbound. Thus, we set

$$t_i^m = t_i^z + \frac{\lambda_i \cdot L_r}{v_r}, \quad (5)$$

where

$$\lambda_i = \begin{cases} 0, & \forall i \in \mathcal{C}(t) \\ 1, & \forall i \in \mathcal{L}(t) \end{cases} \quad (6)$$

v_r is the imposed speed limit inside the roundabout, and λ_i is an indicator corresponding to the traveling approach of vehicle i .

The time t_i^m that vehicle i will be entering the merging zone is restricted by the imposed rear-end collision constraint. To ensure that (3) is satisfied at time t_i^m and that t_i^m can be achieved within the imposed control and speed limits, we impose the following conditions:

1) If vehicles $i - 1$ and i are traveling on the same road, then vehicles $i - 1$ and i should have the predefined safe distance allowable, denoted by $\delta_i(t)$, by the time vehicle i enters the merging zone, i.e.,

$$t_i^m = \max \left\{ \min \left\{ t_{i-1}^m + \frac{\delta_i(t_i^m)}{v_r}, t_i^0 + \frac{L}{v_{min}} + \frac{\lambda_i \cdot L_r}{v_r} \right\}, t_i^0 + \frac{L}{\bar{v}_i} + \frac{\lambda_i \cdot L_r}{v_r}, t_i^0 + \frac{L}{v_{max}} + \frac{\lambda_i \cdot L_r}{v_r} \right\}. \quad (7)$$

2) If vehicle $i - 1$ and i are traveling on the different roads, we constrain the merging zone to contain only one vehicle so as to avoid a lateral collision. Therefore, vehicle i is allowed to enter the merging zone only when vehicle $i - 1$ exits the merging zone, i.e.,

$$t_i^m = \max \left\{ \min \left\{ t_{i-1}^m + \frac{S}{v_r}, t_i^0 + \frac{L}{v_{min}} + \frac{\lambda_i \cdot L_r}{v_r} \right\}, t_i^0 + \frac{L}{\bar{v}_i} + \frac{\lambda_i \cdot L_r}{v_r}, t_i^0 + \frac{L}{v_{max}} + \frac{\lambda_i \cdot L_r}{v_r} \right\}, \quad (8)$$

where \bar{v}_i is the average speed for vehicle i traveling from the entry to the exit of control zone. The recursion is initialized whenever a vehicle enters a control zone, i.e., it is assigned $i = 1$. In this case, t_i^m can be externally assigned as the desired exit time of this vehicle whose behavior is unconstrained except for (1).

3. SIMULATION FRAMEWORK

To evaluate the effectiveness of the proposed approach, a simple roundabout is created and a simulation framework is established in PTV VISSIM environment (Fig. 2). The analytical, closed-form solution described in the previous section is implemented through VISSIM Application Programming Interface (API). In this study, vehicle trajectory

ries are collected every 1 *sec* to estimate fuel consumption, and the aggregated data including travel time and delay are recorded every 60 *sec* for network performance evaluation. Fuel consumption is estimated by using the polynomial metamodel proposed in Kamal et al. (2011) that relates vehicle fuel consumption as a function of speed $v(t)$ and acceleration $u(t)$.

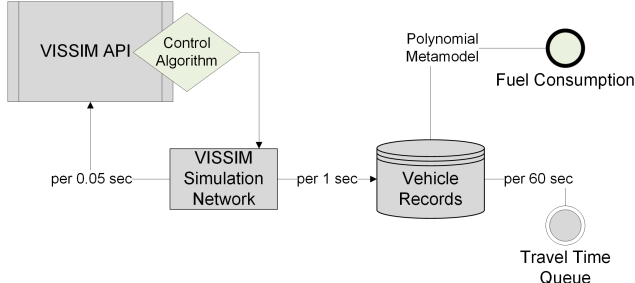


Fig. 2. Simulation framework in the VISSIM environment.

In this study, the arc length of the merging zone is set as 12 *m*, and the length of the control zone for each approach is 300 *m*. With a single-lane roundabout, the entry speed is set as 15.6 *m/s* for both traveling approaches and 8.9 *m/s* is adopted as the speed limit inside the roundabout. Considering the presence of automated vehicle technologies, the maximum acceleration and the minimum acceleration are set as 4.5 *m/s²* and -4.5 *m/s²*, respectively.

To investigate the influence of controlled CAVs on the traffic flow, different CAV market penetration rates (MPR) are considered in the study, including 0%, 20%, 50%, 80%, and 100% MPR. For all cases, a total of 400 vehicles are dispatched from two entry points within 900 *sec*. The simulation time is set as 1200 *sec* in order to process all the vehicles. Five simulation runs are conducted to account for the effect of stochastic components of traffic and driver behaviors.

For the control of CAVs in a mixed environment, if the physically leading vehicle of a CAV is a non-CAV, the CAV will probe the safety constraint continuously to make adjustment of its travel behavior. A simple on-off switch is applied in the study: the control algorithm for a CAV would be always switched on until the safety constraint is activated in terms of the distance between itself and its leading non-CAV.

For 0% penetration of CAVs (i.e., a network of non-CAVs), we apply the Wiedemann car following model; see Wiedemann (1974). In VISSIM, the minimum safe distance is defined as the distance that a driver would maintain with its leading vehicle, which is expressed as a function of standstill distance and headway time. In this study, the default 1.5 *m* standstill distance in VISSIM is adopted and 1.2 *sec* headway time is set for non-CAVs.

4. RESULTS

For the scenario of 0% CAV penetration, the vehicles traveling eastbound have to yield to westbound traffic. If traffic density is low, the gaps between westbound traffic are generally large enough so that few eastbound vehicles need to stop in order to merge into the roundabout.

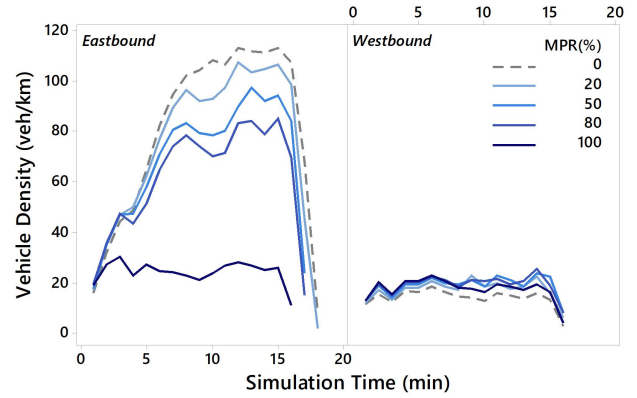


Fig. 3. Vehicle Density.

However, when the demand is near capacity, it is extremely difficult for eastbound traffic to find proper gaps to merge. As a result, a queue is built up until the end of simulation. As shown in Fig. 3, for a network of non-CAVs, while the density of westbound traffic is stable during the entire simulation period, the roadway with eastbound traffic experiences increasing density as vehicles are dispatched into the network. It is not until the end of 900 *sec* when the vehicle input stops, that the density drops and congestion is gradually released.

It is clear that with 100% MPR, the network performance is improved. By optimizing individual vehicle's acceleration and deceleration, eastbound vehicles are able to merge into the roundabout without stops even with high circulating flow. As shown in Fig. 3, the density of eastbound approach becomes stable (and similar to that of westbound approach) throughout the simulation period – the network capacity is leveraged to smooth traffic flow for both traveling approaches. Therefore, during the same time period, the cumulative number of vehicles served by the roundabout increases as compared to 0% MPR case (Fig. 4), leading to an improved roundabout capacity.

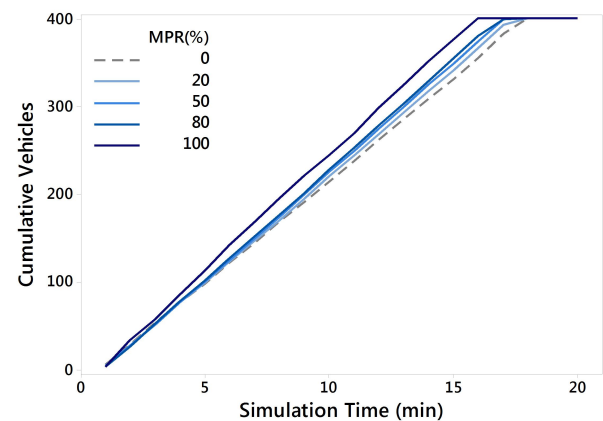


Fig. 4. Cumulative Vehicles.

In addition, through vehicle coordination under 100% MPR, the large variation in traffic conditions for two approaches is minimized (Fig. 5) so that the overall network performance is improved significantly. As a result, a 51% travel time savings is observed for the entire network. Furthermore, by eliminating vehicles' stop-and-go driving for

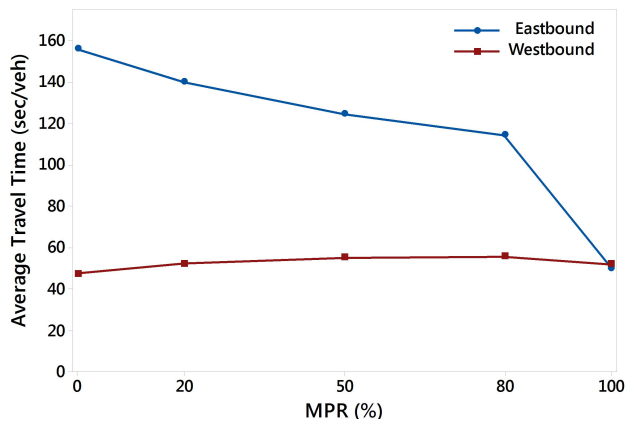


Fig. 5. Average travel time.

eastbound traffic, transient engine operation is minimized, leading to direct fuel consumption savings (Fig. 6); see Malikopoulos et al. (2008, 2010).

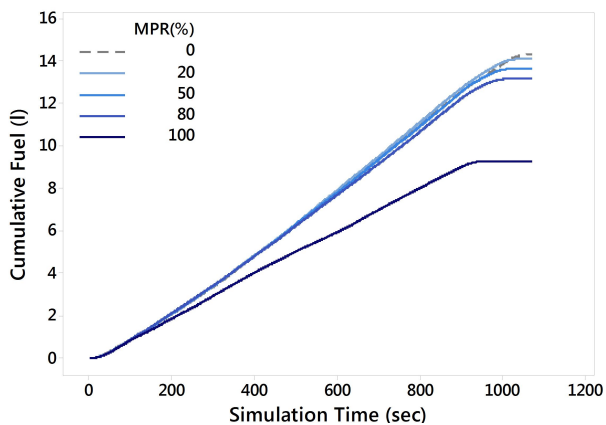


Fig. 6. Cumulative fuel consumption.

Looking into the scenarios with mixed traffic, whereas the introduction of controlled CAVs could lead to improved network performance in terms of total network travel time and fuel consumption, the benefit is not substantial even with high MPR (Table 4). Under mixed traffic condition, a leading non-CAV could slow down a series of following CAVs if it stops before the roundabout to yield to the circulating flow. Especially, when the traffic demand is high, the traffic flow becomes extremely unstable and is sensitive to disturbance. In such case, even with only one stopped non-CAV, a queue can be easily formed. Furthermore, due to high circulating flow, it is hard to dissolve such queue. Therefore, under high CAV MPR (e.g., 80%), even though there are enough CAVs traveling eastbound to form a smooth flow, the delay caused by non-CAVs that wait for safe gaps to merge could be substantial.

5. CONCLUSIONS

The proposed approach hinges on the fact that in this new environment of massive amount of information from vehicles and infrastructure, we have intriguing and promising opportunities for enabling users to better control transportation network to reduce energy consumption, travel delays and improve safety. The efficiency of the proposed

Table 1. Improvements in measures of effectiveness under different market penetration rates.

MPR (%)	Travel Time (%)	Total Delay (%)	Fuel Consumption (%)
0	0	0	0
20	4	15	1
50	11	35	5
80	16	45	8
100	51	100	35

approach was investigated through a simulation environment, where a number of CAVs were controlled before they entered into a roundabout to form a smooth traffic flow. The results showed that vehicle coordination yielded significantly improved travel time and fuel consumption under 100% CAV MPR. However, the improvement of network performance under mixed traffic condition is not as substantial as compared to 100% MPR for a near-capacity demand scenario.

Ongoing research effort is focusing on investigating the interactions between CAVs and non-CAVs in a mixed traffic environment and improving the control algorithm to achieve better network performance with low market penetration rates of CAVs. Future research should also consider vehicle coordination for roundabouts with multiple lanes and multiple entry/exit points (i.e., increased conflicting points and weaving sections).

ACKNOWLEDGEMENTS

The work described was sponsored by the U.S. Department of Energy (DOE) Vehicle Technologies Office (VTO) under the Systems and Modeling for Accelerated Research in Transportation (SMART) Mobility Laboratory Consortium, an initiative of the Energy Efficient Mobility Systems (EEMS) Program. The authors acknowledge Eric Rask of Argonne National Laboratory for leading the CAVs Pillar of the SMART Mobility Laboratory Consortium. The following DOE Office of Energy Efficiency and Renewable Energy (EERE) managers played important roles in establishing the project concept, advancing implementation, and providing ongoing guidance: David Anderson.

REFERENCES

- Al-Madani, H.M.N. (2003). Dynamic vehicular delay comparison between a police-controlled roundabout and a traffic signal. *Transportation Research Part A: Policy and Practice*, 37(8), 681–688.
- Antoniotti, M., Deshpande, A., and Girault, A. (1997). Microsimulation analysis of automated vehicles on multiple merge junction highways. *IEEE International Conference in Systems, Man, and Cybernetics*, 839–844.
- Athans, M. (1969). A unified approach to the vehicle-merging problem. *Transportation Research*, 3(1), 123–133.
- Awal, T., Kulik, L., and Ramamohanrao, K. (2013). Optimal traffic merging strategy for communication- and sensor-enabled vehicles. In *Intelligent Transportation Systems - (ITSC), 2013 16th International IEEE Conference on*, 1468–1474.
- de La Fortelle, A. (2010). Analysis of reservation algorithms for cooperative planning at intersections. *13th*

- International IEEE Conference on Intelligent Transportation Systems*, 445–449.
- Dresner, K. and Stone, P. (2004). Multiagent traffic management: a reservation-based intersection control mechanism. In *Proceedings of the Third International Joint Conference on Autonomous Agents and Multiagent Systems*, 530–537.
- Dresner, K. and Stone, P. (2008). A Multiagent Approach to Autonomous Intersection Management. *Journal of Artificial Intelligence Research*, 31, 591–653.
- Flannery, A. and Datta, T. (1997). Operational Performance Measures of American Roundabouts. *Transportation Research Record: Journal of the Transportation Research Board*, 1572, 68–75.
- Flannery, A., Elefteriadou, L., Koza, P., and McFadden, J. (1998). Safety, delay, and capacity of single-lane roundabouts in the United States. *Transportation Research Record: Journal of the Transportation Research Board*, (1646), 63–70.
- Huang, S., Sadek, A.W., and Zhao, Y. (2012). Assessing the Mobility and Environmental Benefits of Reservation-Based Intelligent Intersections Using an Integrated Simulator. *IEEE Transactions on Intelligent Transportation Systems*, 13(3), 1201–1214.
- Hummer, J., Milazzo, J., Schroeder, B., and Salamati, K. (2014). Potential for metering to help roundabouts manage peak period demands in the United States. *Transportation Research Record: Journal of the Transportation Research Board*, (2402), 56–66.
- Kachroo, P. and Li, Z. (1997). Vehicle merging control design for an automated highway system. In *Proceedings of Conference on Intelligent Transportation Systems*, 224–229.
- Kamal, M.A.S., Mukai, M., Murata, J., and Kawabe, T. (2011). Ecological Vehicle Control on Roads With Up-Down Slopes. *IEEE Transactions on Intelligent Transportation Systems*, 12(3), 783–794.
- Levine, W.S. and Athans, M. (1966). On the optimal error regulation of a string of moving vehicles. *IEEE Transactions on Automatic Control*, 11(3), 355–361.
- Lu, X.Y., Tan, H.S., Shladover, S.E., and Hedrick, J.K. (2000). Implementation of longitudinal control algorithm for vehicle merging. *Proceedings of the AVEC 2000*.
- Malikopoulos, A.A. (2015). Centralized stochastic optimal control of complex systems. In *2015 European Control Conference, ECC 2015*, 721–726.
- Malikopoulos, A.A. (2017). A Duality Framework for Stochastic Optimal Control of Complex Systems. *IEEE Transactions on Automatic Control*, 61(10), 2756–2765.
- Malikopoulos, A.A. and Aguilar, J.P. (2013). An optimization framework for driver feedback systems. *IEEE Transactions on Intelligent Transportation Systems*, 14(2), 955–964.
- Malikopoulos, A.A., Assanis, D.N., and Papalambros, P.Y. (2008). Optimal engine calibration for individual driving styles. In *SAE Congress*.
- Malikopoulos, A.A., Cassandras, C.G., and Zhang, Y.J. (2018). A Decentralized Energy-Optimal Control Framework for Connected Automated Vehicles at Signalized-Free Intersections. *Automatica*.
- Malikopoulos, A.A., Papalambros, P.Y., and Assanis, D.N. (2010). Online identification and stochastic control for autonomous internal combustion engines. *Journal of Dynamic Systems, Measurement, and Control*, 132(2), 024504–024504.
- Martin-Gasulla, M., García, A., and Moreno, A.T. (2016). Benefits of Metering Signals at Roundabouts with Unbalanced Flow: Patterns in Spain. *Transportation Research Record: Journal of the Transportation Research Board*, (2585), 20–28.
- Ntousakis, I.A., Nikolos, I.K., and Papageorgiou, M. (2016). Optimal vehicle trajectory planning in the context of cooperative merging on highways. *Transportation Research Part C: Emerging Technologies*, 71(Supplement C), 464 – 488.
- Ran, B., Leight, S., and Chang, B. (1999). A microscopic simulation model for merging control on a dedicated-lane automated highway system. *Transportation Research Part C: Emerging Technologies*, 7(6), 369–388.
- Rios-Torres, J. and Malikopoulos, A.A. (2017a). A Survey on the Coordination of Connected and Automated Vehicles at Intersections and Merging at Highway On-Ramps. *IEEE Transactions on Intelligent Transportation Systems*, 18(5), 1066–1077.
- Rios-Torres, J. and Malikopoulos, A.A. (2017b). Automated and Cooperative Vehicle Merging at Highway On-Ramps. *IEEE Transactions on Intelligent Transportation Systems*, 18(4), 780–789.
- Rios-Torres, J., Malikopoulos, A.A., and Pisu, P. (2015). Online Optimal Control of Connected Vehicles for Efficient Traffic Flow at Merging Roads. In *2015 IEEE 18th International Conference on Intelligent Transportation Systems*, 2432–2437.
- Schmidt, G. and Posch, B. (1983). A two-layer control scheme for merging of automated vehicles. In *The 22nd IEEE Conference on Decision and Control*, 495–500.
- Schrank, D., Eisele, B., Lomax, T., and Bak, J. (2015). 2015 Urban Mobility Scorecard, Texas A&M Transportation Institute 2015. Technical report.
- Sisiopiku, V.P. and Oh, H.U. (2001). Evaluation of roundabout performance using SIDRA. *Journal of Transportation Engineering*, 127(2), 143–150.
- Wiedemann, R. (1974). Simulation des Strassenverkehrsflusses.
- Xu, H., Zhang, K., and Zhang, D. (2016). Multilevel traffic control at large fourleg roundabouts. *Journal of Advanced Transportation*, 50(6), 988–1007.
- Yan, F., Dridi, M., and El Moudni, A. (2009). Autonomous vehicle sequencing algorithm at isolated intersections. *2009 12th International IEEE Conference on Intelligent Transportation Systems*, 1–6.
- Yang, X., Li, X., and Xue, K. (2004). A new traffic-signal control for modern roundabouts: method and application. *IEEE Transactions on Intelligent Transportation Systems*, 5(4), 282–287.
- Zhang, Y.J., Malikopoulos, A.A., and Cassandras, C.G. (2016). Optimal Control and Coordination of Connected and Automated Vehicles at Urban Traffic Intersections. In *Proceedings of the American Control Conference*, 6227–6332.
- Zohdy, I.H., Kamalanathsharma, R.K., and Rakha, H. (2012). Intersection management for autonomous vehicles using iCACC. *2012 15th International IEEE Conference on Intelligent Transportation Systems*, 1109–1114.